



**Facility Name: Quality Hotel Sheridan Plaza**

**Facility Type: Hotel/Apartments**

**Facility Address: 295 Sheridan St, Cairns**

**Phone: 07 4031 6500 – within Australia  
+61 7 4031 6500 – International**

**Fax: 07 4031 6226 – within Australia  
+61 7 4031 6226– International**

**Email: [gm@sheridanplaza.com.au](mailto:gm@sheridanplaza.com.au)**

**Web: [www.sheridanplaza.com.au](http://www.sheridanplaza.com.au)**



**Room numbers: Two accessible rooms**



**Parking:**

There are no designated accessible parking bays, although there is an undercover drop-off area outside reception beside the ramp (which is not undercover).

**Entry into reception**

Entry into reception is from Mcleod Street and is through double manual glass doors into an open level area with no steps or thresholds with the width being 1350mm with both doors opened. The reception desk does not have a lowered section for wheelchair users, but staff are friendly and will assist where necessary.



### **Access to public areas**

The restaurant and bar is across from the reception with level entry. The measurement of the dining room door is 1350mm wide. There is a pool with a small ramp into it but no other access is provided.

### **Accommodation:**

There are two accessible guest rooms which are located on the fourth and fifth floor which has access by way of a lift, which has a clear opening of 1018mm in the doorway and is 1503mm wide and 2560mm deep. There are no verbal announcements at each floor, although the buttons are raised. Access into the room is over a level threshold with no sills, the door width is 824mm clear opening. The door has D style handles that requires some force to open.



The bedroom is configured with a queen size bed. Under bed clearance is 115mm and the height to the top of mattress is 534 mm. The widest clearance at the side of the bed is 1220mm.

There is a writing desk provided with a height to the top of the desk at 780mm and a clear height from the floor of 677mm.

There is a small bar fridge with tea and coffee making facilities.  
The wardrobe clothes rail is 1590mm from the floor and the light switches are positioned 900mm from the floor.

There is a small balcony off the bedroom with a small lip, which may make access difficult.



### **Sanitary Facilities:**

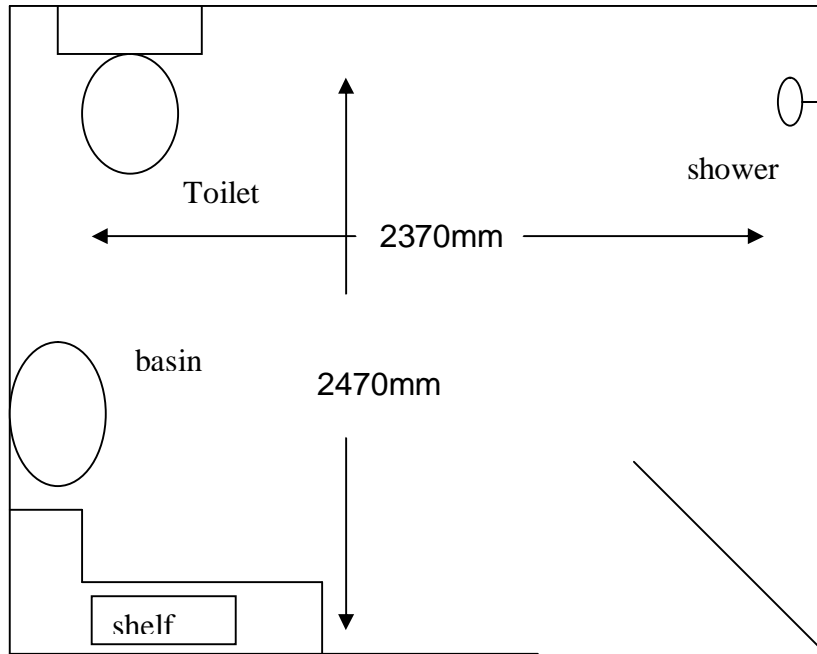
Entry into the accessible shower and toilet is through a 730mm clear opening door. The facility is a combined toilet and shower with a dimension of 2470mm long by 2370mm wide.



There are no grab-rails in the shower and the management will provide a plastic chair. The shower rose is on a sliding base with a flick mix tap. Clearance to the under side of the sink is 694mm with a height to top of sink at 810mm.



Grab rails are fitted to the toilet and are mounted 830mm from the floor to top of grab rail. The height from the floor to the top of the pan seat is 400mm and 580mm from wall to centre of seat  
No emergency call button provided in the shower and toilet.



**Diagram not drawn to scale.**

**General:**

Assistance dogs are welcome on the premises.