



Facility Name: Shangri-La Hotel

Facility Type: Hotel

Facility Address: The Marina, Cairns

Phone: 07 4052 7629
07 4031 1411 – within Australia
+617 4052 7629 –
+617 4031 1411 – International

Fax: 07 4031 2815 – within Australia
+61 7 4031 2815 – International

Email: kelly.geddes@shangri-la.com

Web: www.shangri-la.com

Room numbers: Four accessible rooms, two are superior.



Entry into reception

Entry into reception is through double automatic glass doors into an open level area with no steps or thresholds. The reception desk does not have a lowered section for wheelchair users, but staff are very friendly and will assist where necessary. In the reception area you will find a tour desk and internet café for you convenience.

Parking:

There are two designated accessible parking bays which are in the underground car park and there is lift access to the upper floors.

The restaurant and breakfast bar is on the water front side of the reception with level entry.



Breakfast area



Bar area

There is a pool which is on the first floor and has access into the pool area but has no special access into the pool, but could be accessed from the side. (see photo)



Accommodation:

There are four accessible guest rooms, two of which are superior rooms and are located on the upper floors, which have access by way of a lift. There are three lifts which have a clear opening of 1100mm in the doorway and 800mm wide and 1900mm deep. There are no verbal announcements or raised letters in the lifts.

There is level access into the room and the door width is 770mm clear opening. The door has a D handle but requires some force to open.



The bedroom is configured with two single beds which can be made into a double bed if required. There is no clearance under the bed and the height to the top of mattress is 580 mm. The widest clearance at the side of the bed is 1300mm.



There is a writing desk provided with a height to the top of the desk at 740mm and a clear height from the floor of 690mm. There is a small bar fridge with tea and coffee making facilities. The wardrobe clothes rail is 1400mm from the floor.



There is a small balcony over-looking Trinity Inlet with a small lip, as seen the photo, but if a ramp is needed that will be supplied.

Sanitary Facilities:

Entry into the accessible shower and toilet is through a 790mm level opening door. The facility is a combined toilet and shower with a dimension of 2800mm long by 2300mm wide.



There is a small shower seat provided on the wall.

There is a horizontal grab rail which measures 780mm from the floor and the shower rose is on a sliding base.

Clearance to the under side of the sink is 770mm with a height to top of sink being 890mm.

The base of the mirror is 1060mm from the floor.

Grab rails are fitted beside the toilet and are mounted 780mm from the floor to top of grab rail. The height from the floor to the top of the pan seat is 470mm and 610mm from wall to centre of the toilet seat.

There is an emergency call phone provided beside the toilet.

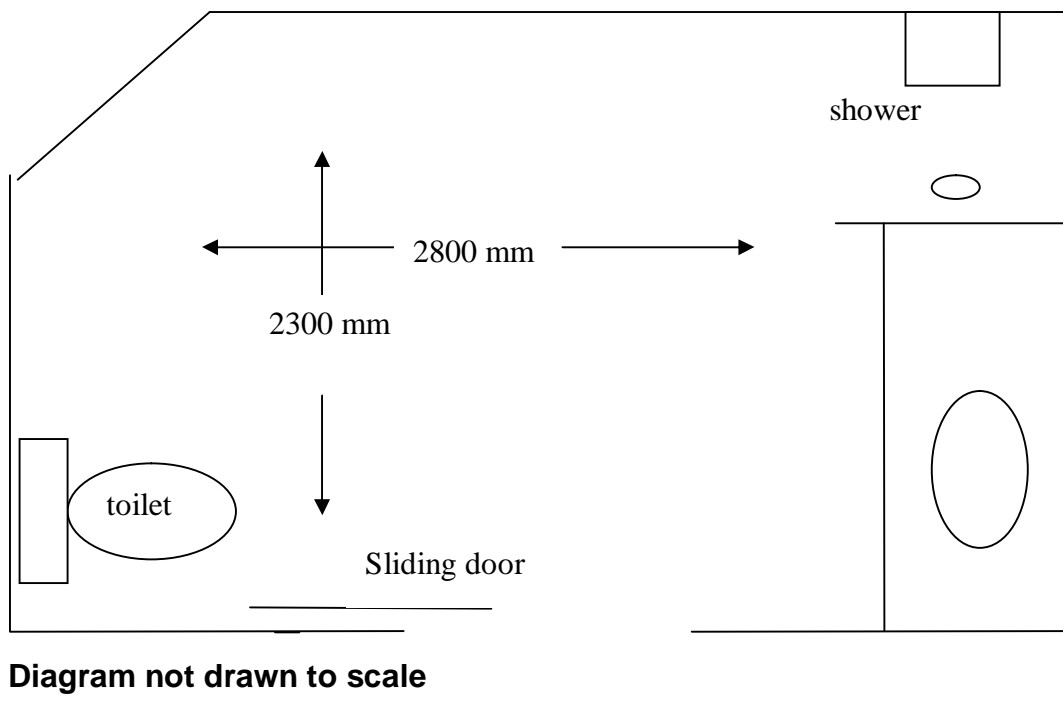


Diagram not drawn to scale

General: There is a gymnasium downstairs in the Pier Shopping Centre which the hotel clients have access to and it is completely accessible.



Below are photos of the superior room.

