



Facility Name: Green Island

Facility Type: Resort

Facility Address: Green Island Cairns

**Phone: Toll Free 1800 673 366 – within Australia
07 4031 3300 – within Australia
+61 7 4031 3300 – International**

**Fax: 07 4052 1511 – within Australia
+61 7 4052 1511 – International**

Email: res@greenislandresort.com.au

Accommodation type: One accessible room with interconnecting room.

Getting there:

Located on the Great Barrier Reef, Green Island is just 27km, a 45 minute boat ride from Cairns with Great Adventures high speed catamarans. These transfers are complimentary for house guests and are confirmed at the time of booking.

For guests who use a wheelchair, departure times on the ferries will be tidal dependant and the reservation staff will advise the best departure time for you. Due to Workplace Occupational Health and Safety crew members are not allowed to lift wheelchairs onto the vessel.

There are well designed gangways to allow wheelchairs onto the ferries and some guests may need a carer or someone to assist while boarding.

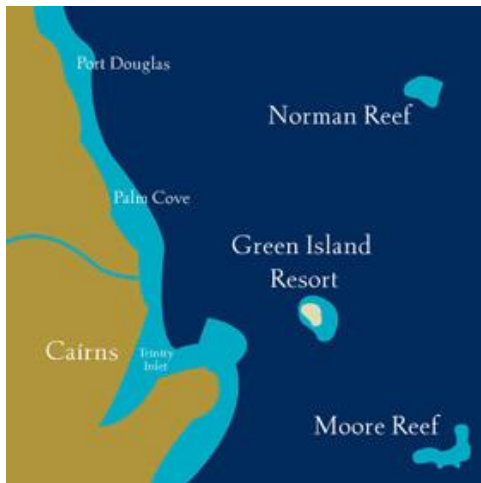
Boat Departure Times

From Cairns: 0830, 1030, 1300
From Green Island: 0915*, 1200, 1430 or 1630

* Turnaround vessel, departure times may vary.

Optional transfers include the following *

- Coach transfers from most hotels and resorts in Cairns, the Northern Beaches and Port Douglas
- Limousine transfers from Cairns International Airport
- Helicopter transfers from Cairns or Cairns International Airport.



On arrival at the island

Guests staying overnight at the resort will be greeted by staff on the wharf and escorted into the resort.

Reception

Accessing reception is via a ramp approx 3m wide that will take you directly to reception. There is a small door sill leading into reception and some guests may require assistance. Reception has a lowered desk with clearance underneath for your feet.



Boardwalk leading to information counter. Ramp to reception is to the right

Access to public areas

Green Island is linked from the wharf to your accommodation and all public areas by a system of boardwalks and paved paths.

Entry into Emeralds restaurant and the dive shop have small door sills and some guest may require assistance. The pool bar, cafes and shops are all accessible.

Accessible Toilets:

A set of accessible toilets is located in the café, pool area and is a large facility and well equipped.

Accommodation:

The accessible guest room with interconnecting room is located close to reception; access is via a wide boardwalk. Entry into the room is up a small timber door sill ramp and some guests may require assistance.

Entry into the room is via a wide 830mm door with a knob style door handle. Once inside the room is quite spacious. Room furniture can be moved to suit the guest's requirements. The circulation space within the room is very good and large wheelchairs will be able to move unhindered. There are two double beds within the accessible room and one queen size bed in the adjoining room.

Clearance beneath the beds from floor to bed base is only 100mm. Clearance through to the interconnecting room doors is 830mm. One of the doors is a fire door and a door wedge is required to hold it open, contact reception and they will provide one.



Entry into accessible room



Timber door sill ramp



Accessible bedroom



Looking through to accessible bathroom



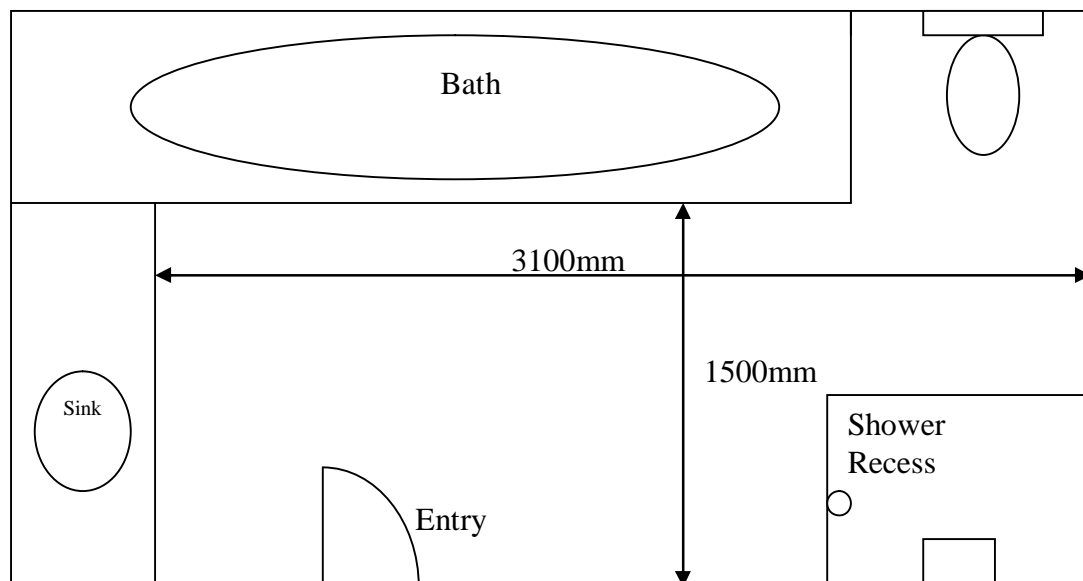
Adjoining room



Sanitary Facilities:

Entry into the accessible shower is through a sliding door with a clear width of 790mm as the door does not fully open into the 900mm door frame.

The facility is a combined toilet and shower with a dimension of 3100mm long by 1500mm wide and a shower recess of 650mm by 480mm. There is a 20mm drop into the shower recess, some guest may require assistance and would not be suitable for hoists.



Toilet flushing control is flush mounted into the wall and may be difficult to access for some guests with hand disabilities.

Grab rails are fitted to the toilets and are mounted 810mm from the floor to top of grab rail.

Shower is fitted with a fold down seat that is 460mm wide. There is a horizontal and vertical grab rail fitted and the shower has a lever flick mix tap.



Access to beaches and water activities:

The boardwalks lead right up the beaches along the northern side of the island but there is no access onto the sand. Adventurous guest may be able to access the beach with assistance from a carer and try snorkelling around the reef.

There is no access into the glass bottom boats or underwater observatory. You will be able to enjoy the fish feeding which takes place in the evening when the day visitors have all departed the island.

Overall the island is a very relaxing break; even if you are there as a day visitor you will enjoy the calming atmosphere of island life.



Boardwalks around the island

Activities on Green Island

Complementing the beauty of Green Island, the activities in this adventure playground are plentiful. Do as much or as little as you please.

Inclusive Activities

- Welcome sunset drinks
- Glass bottom boat tour
- [Snorkelling equipment](#)
- Guided night nature walks
- Self guided rainforest walks
- Fish feeding daily
- Entry to the world's oldest Underwater Observatory *
- Windsurfers, surf skis & canoes * [Includes daily windsurfing instruction]
- Beach volleyball
- Beach chairs & umbrellas at Beach Hire *
- Portable beach chairs at Beach Hire

Optional Activities

As a popular day visitor island, Green Island Resort house guests benefit from the large range of optional island activities available.

- Introductory and certified scuba diving (Dive Shop) [find out more about diving](#)
- Boat snorkel trip (Dive Shop)
- Great Barrier Reef Day Tour to/from Green Island with Great Adventures
- Club Spa Massage & Beauty *
- Parasailing *
- Helicopter and Seaplane scenic flights *
- Seawalker helmet diving *
- Marineland Melanesia Aquarium, Museum & Crocodile Habitat *

- Souvenir photos and photographic service *

For prices and further information on Optional Activities go to
<http://www.green-island.com.au/activities.html>